



OUR FULL SERVICE OFFERING



A LEADING GLOBAL CDMO

Recipharm is dedicated to meeting your evolving needs through commercial and operational excellence, scientific know-how and customer connectivity. Our worldwide reach and localised market expertise allow us to anticipate your needs and provide tailored, reliable services to consistently deliver on time and in full.

GLOBAL AND AGILE

With facilities around the world, delivering to over 400 customers, we are global in nature yet local to you. When we work together you benefit from the security of a global partner, without compromising on the flexibility you and your project deserve.

SERIOUS ABOUT SUSTAINABILITY

The Science Based Targets initiative has validated our near-term science-based emissions reduction targets. We are committed (and are on track) to:

- Increase our sourcing of renewable electricity to 100.0% by 2024.
- Reduce absolute Scope 1 and 2 Greenhouse Gas emissions by 42.1% by 2030 from a 2021 base year.
- Reduce absolute Scope 3 Greenhouse Gas emissions by 25.0% within the same timeframe.

ACCELERATED ADVANCED THERAPIES

Our advanced process development and manufacturing services for AAV, RNA, plasmids, oncolytic viruses, microbiome and recombinant proteins are designed to expedite the journey of ATMPs through clinic trials.



RECIPHARM ORAL DOSE

DRUG SUBSTANCE	 Bengaluru	 Leganés	 Monheim/ Zwickau	 Paderno Dugnano	 Pianezza	 Queluz/ Odivelas	 Uppsala	 Yavne
Small molecule				<div><div></div><div></div></div>				<div><div></div></div>

SOLIDS

Tablets	<div><div></div><div></div></div>	<div><div></div></div>	<div><div></div><div></div></div>	<div><div></div></div>		<div><div></div></div>	<div><div></div></div>	
Effervescent tablets	<div><div></div><div></div></div>	<div><div></div></div>				<div><div></div></div>		
Capsules	<div><div></div><div></div></div>	<div><div></div></div>	<div><div></div><div></div></div>	<div><div></div></div>		<div><div></div></div>		
Coated pellets	<div><div></div></div>		<div><div></div></div>					
Granules, powders	<div><div></div><div></div></div>	<div><div></div></div>	<div><div></div><div></div></div>			<div><div></div></div>		

SEMI-SOLIDS

Suppositories						<div><div></div></div>	<div><div></div></div>	
Gels, ointments, creams	<div><div></div></div>					<div><div></div></div>		
Pre-filled syringes, cartridges								
Terminal sterilisation								

LIQUIDS

Sprays					<div><div></div></div>	<div><div></div></div>		
Aerosols								
Suspensions, emulsions	<div><div></div></div>				<div><div></div></div>	<div><div></div></div>		
Liquids	<div><div></div></div>				<div><div></div></div>	<div><div></div></div>		<div><div></div></div>

SPECIALS

Beta-lactams								
Controlled drugs	<div><div></div><div></div></div>	<div><div></div></div>	<div><div></div></div>		<div><div></div></div>	<div><div></div></div>		<div><div></div></div>
Analytical specialty lab	<div><div></div></div>							<div><div></div></div>

PACKAGING

Blisters	<div><div></div><div></div></div>	<div><div></div></div>	<div><div></div></div>		<div><div></div></div>	<div><div></div></div>	<div><div></div></div>	
Bottles, jars	<div><div></div><div></div></div>	<div><div></div></div>	<div><div></div></div>			<div><div></div></div>	<div><div></div></div>	
Tubes	<div><div></div></div>					<div><div></div></div>		
Sachets	<div><div></div></div>		<div><div></div></div>			<div><div></div></div>		
Secondary pack pre-filled syringes			<div><div></div></div>					

Manufacturing Development

GMP LICENSES & ISO

FDA (US)	<div><div></div></div>	<div><div></div></div>	<div><div></div></div>	<div><div></div></div>	<div><div></div></div>	<div><div></div></div>	<div><div></div></div>	
EU GMP	<div><div></div></div>	<div><div></div></div>	<div><div></div></div>	<div><div></div></div>	<div><div></div></div>	<div><div></div></div>	<div><div></div></div>	
PMDA (JPN)	<div><div></div></div>	<div><div></div></div>	<div><div></div></div>	<div><div></div></div>		<div><div></div></div>	<div><div></div></div>	
Clinical trial material (IMP)	<div><div></div></div>	<div><div></div></div>	<div><div></div></div>	<div><div></div></div>		<div><div></div></div>	<div><div></div></div>	<div><div></div></div>
Veterinary products			<div><div></div></div>	<div><div></div></div>	<div><div></div></div>	<div><div></div></div>		
ISO 13485	<div><div></div></div>					<div><div></div></div>	<div><div></div></div>	
ISO 14001	<div><div></div></div>	<div><div></div></div>	<div><div></div></div>	<div><div></div></div>	<div><div></div></div>	<div><div></div></div>	<div><div></div></div>	
ISO 45001/OHSAS 18001	<div><div></div></div>	<div><div></div></div>	<div><div></div></div>	<div><div></div></div>		<div><div></div></div>	<div><div></div></div>	

RECIPHARM STERILE DELIVERY

FILL & FINISH	 Bengaluru	 Benslimane	 Brescia	 Cuxhaven	 Kayserberg	 Lenoir	 Masate	 Wasserburg	 Watertown
---------------	---	--	---	--	--	--	--	--	---

Vials		<div><div></div></div>	<div><div></div></div>	<div><div></div></div>		<div><div></div></div>	<div><div></div></div>	<div><div></div><div></div></div>	<div><div></div></div>
Ampoules			<div><div></div></div>				<div><div></div></div>		
Pre-filled syringes/cartridges		<div><div></div></div>				<div><div></div></div>		<div><div></div><div></div></div>	
Lyophilisation in vials				<div><div></div></div>		<div><div></div></div>	<div><div></div></div>	<div><div></div></div>	
Dry powder fill			<div><div></div></div>						
Beta-lactams			<div><div></div></div>						
Vaccines		<div><div></div></div>		<div><div></div></div>	<div><div></div><div></div></div>	<div><div></div></div>		<div><div></div></div>	<div><div></div></div>
Blow-fill-seal					<div><div></div><div></div></div>				
Terminal or bulk sterilisation			<div><div></div></div>		<div><div></div></div>	<div><div></div></div>	<div><div></div></div>	<div><div></div></div>	
Parental development	<div><div></div></div>								

INSPECTION & PACKAGING

Manual		<div><div></div></div>	<div><div></div></div>	<div><div></div></div>	<div><div></div></div>	<div><div></div></div>	<div><div></div></div>	<div><div></div></div>	<div><div></div></div>
Semi-automatic		<div><div></div></div>	<div><div></div></div>		<div><div></div></div>	<div><div></div></div>	<div><div></div></div>	<div><div></div></div>	
Automatic		<div><div></div></div>	<div><div></div></div>		<div><div></div></div>	<div><div></div></div>	<div><div></div></div>	<div><div></div></div>	
Labeling		<div><div></div></div>	<div><div></div></div>		<div><div></div></div>	<div><div></div></div>	<div><div></div></div>	<div><div></div></div>	
Pouching					<div><div></div></div>				
Packaging incl. serialisation		<div><div></div></div>	<div><div></div></div>		<div><div></div></div>	<div><div></div></div>	<div><div></div></div>	<div><div></div></div>	

Manufacturing Development




GMP LICENSES & ISO

FDA (US)			<div><div></div></div>		<div><div></div></div>	<div><div></div></div>		<div><div></div></div>	
EU GMP			<div><div></div></div>		<div><div></div></div>		<div><div></div></div>	<div><div></div></div>	
PMDA (JPN)					<div><div></div></div>			<div><div></div></div>	
Clinical trial material (IMP)			<div><div></div></div>	<div><div></div></div>	<div><div></div></div>		<div><div></div></div>	<div><div></div></div>	<div><div></div></div>
Veterinary products			<div><div></div></div>						
ISO 13485					<div><div></div></div>				
ISO 14001			<div><div></div></div>		<div><div></div></div>		<div><div></div></div>	<div><div></div></div>	
ISO 45001/OHSAS 18001			<div><div></div></div>		<div><div></div></div>		<div><div></div></div>	<div><div></div></div>	



VIRAL

RAW & STARTING MATERIALS

	 Cuxhaven	 Oeiras	 Watertown, MA
Plasmid DNA production		●	●
Pre-MVSS rescue from plasmid	●	●	
Proprietary cell line licensing (Cevec, Expres2ion, Advec)	●	●	
Cell bank production (MCB/WCB)	●	●	●
Master virus seed production (MVSS/WVSS)	●	●	

DEVELOPMENT

Process development (USP, DSP, formulation)	●	●	●
Analytical method establishment (IPC, QC lot release)	●	●	●

MANUFACTURE, FILL & FINISH

Drug substance (non-GMP/GMP)	●	●	●
- <i>Avian-based production (eggs, chick-embryo fibroblasts)</i>	●		
- <i>Cell culture-based production (primary, continuous cell lines)</i>	●	●	●
Drug product (non-GMP/GMP)	●	●	●
Sterile fill & finish (liquid)	●	●	●
Sterile fill & finish (lyophilisation)	●		

QUALITY CONTROL RELEASE & STABILITY

In-process control, drug substance & drug product testing	●	●	●
Quality control lot release testing	●	●	●
Control cell generation	●	●	
Assay qualification & validation	●	●	●
Stability studies	●	●	●

NUCLEIC-ACID-BASED

RAW & STARTING MATERIALS

Plasmid cloning			●
Plasmid DNA production		●	●

DEVELOPMENT

Process (IVT, DNA digestion, RNA purification)		●	●
Analytical assays		●	●
mRNA encapsulation			●

MANUFACTURE, FILL & FINISH

Fermentation & plasmid expansion		●	●
Plasmid linearisation, transcription, capping, tailing		●	●
mRNA encapsulation (lipid nanoparticle formulation)			●
Drug product (non-GMP/GMP)		●	●
- <i>Vials</i>		●	●

QUALITY CONTROL RELEASE & STABILITY

In-process control sample testing		●	●
Quality control release testing		●	●
Assay qualification & validation		●	●
Stability studies		●	●

MICROBIOME

RAW & STARTING MATERIALS

	 Cuxhaven	 Oeiras	 Watertown, MA
Strain selection		●	●
Colony isolation		●	●
Cell bank production (MCB/WCB)		●	●
Proprietary media		●	●

DEVELOPMENT

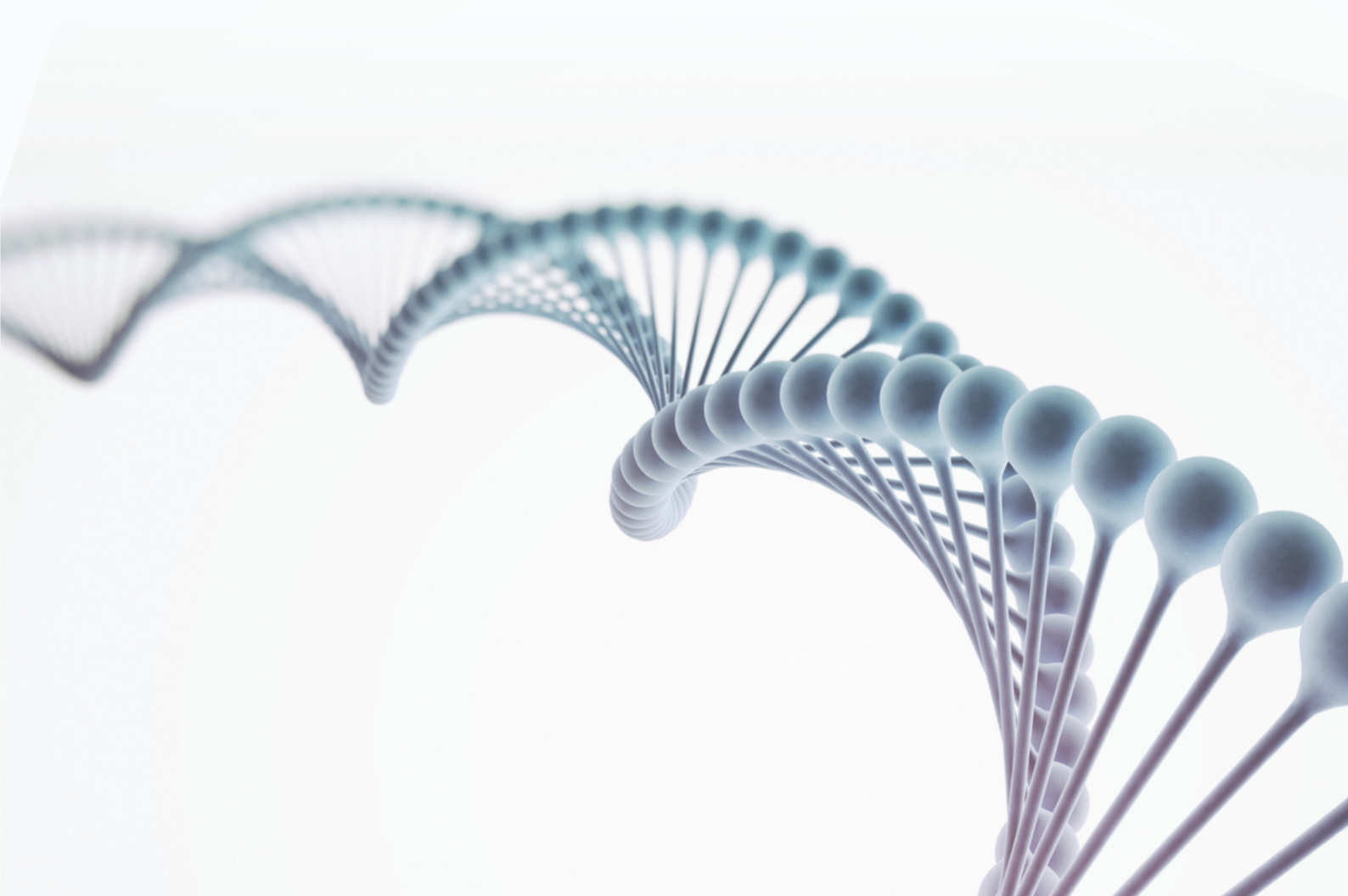
Process (USP, DSP, formulation)		●	●
Analytical assays		●	●
Analytical method transfer & development		●	●

MANUFACTURE, FILL & FINISH

Drug substance (non-GMP/GMP)		●	●
Drug product (non-GMP/GMP)		●	●
- <i>Capsules</i>		●	●
- <i>Bottles</i>		●	●
- <i>Vials</i>		●	

QUALITY CONTROL RELEASE & STABILITY

In-process control, drug substance & drug product testing		●	●
Quality control release testing		●	●
Assay qualification & validation		●	●
Stability studies		●	●



A GLOBAL NETWORK WITH LOCAL EXPERTISE

Our ever-expanding alliance of expertise and modalities now encompasses a worldwide network of sites and business capabilities, delivering to over 100 markets. Our global infrastructure provides you with unrivalled access to local expertise and specialised support – regardless of the geographical market or project size.

RECIPHARM STERILE DELIVERY

France
Kaysersberg

Germany
Wasserburg

India
Bengaluru

Italy
Masate
Brescia

Morocco
Benslimane

USA
Lenoir

RECIPHARM ADVANCED BIO

Germany
Cuxhaven

Portugal
Oeiras

USA
Watertown

RECIPHARM ORAL DOSE

Germany
Monheim
Zwickau

India
Bengaluru

Israel
Yavne

Italy
Paderno Dugnano
Pianezza

Portugal
Odivelas
Queluz

Spain
Leganés

Sweden
Uppsala

ASSOCIATED COMPANIES

New Biologix
Gene therapy
(Switzerland)

SERIOUS ABOUT SUSTAINABILITY

